



FEL990 Series

ELECTRIC MORTICE LOCK



The FEL990 Series electric mortice lock is true multi-functional locking device. It has been developed for simplicity - simplicity for the stockist, the installer and the end-user. Only two options are available - either monitored or non-monitored.

The lock can be operated by push buttons, intercom systems and key switches. The strike can also be integrated with electronic access control systems for use with security devices such as keypads or card readers.

Features

- Single-sided locking (vestibule) / double-sided locking (combination)
- Power To Lock (fail safe) / Power To Open) (fail safe)
- 10 year warranty (mechanical)
- 1 year warranty (electronic)
- Left hand / right hand operation
- Multi-voltage - 12-24VDC / 350mA momentary, 100mA operating including LED furniture if applicable
- Up to 4-hour fire rated in accordance with
- AS1905.1:2015 (contact Allegion for more details)
- Conforms to S3* (Security) and D3 (Durability) Australian Lock Standard (AS4145.2:1993)



Warranties

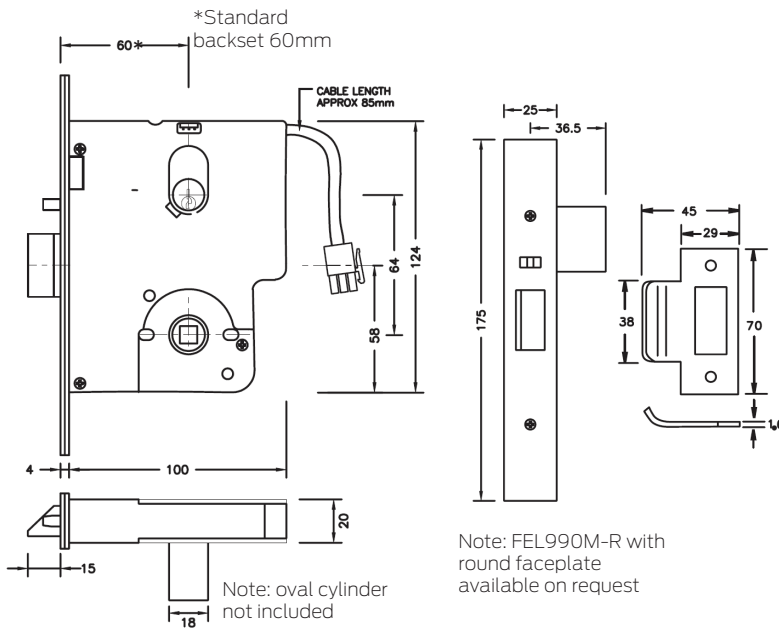
Mechanical	5 years
Electronic	5 years



Technical specifications

Part No.	FEL990M	FEL990
Certification/ Approvals	Conforms when used with equivalent S3 keying system CE/△	
Function	Vestibule and combination lock (field selectable of either/or both sides locked) Lock handed (left hand/right hand field selectable)	
Lock Operation	Fail safe / fail secure adjustable on site - one product for both applications	
Voltage/Current	Multi-voltage - 12-24VDC / 350mA momentary, 100mA operating including LED furniture if applicable Reverse polarity protected Lock secure status and key override microswitch max. rating 500mA@30VDC Door status reed switch max. rating 100mA operating	
Monitoring (990 version only)	Door position monitoring by reed switch Lock status monitoring by a combination of: Locking bar (hub/handle/s locked), Deadlatching bolt (suppressed, latchbolt (out) locking parameters Dual key override monitoring (KOM) Request to exit (REX) via hub/ handle (s) LED indication	
Environmental	-20 to +60 degrees C	
Door Thickness	32 - 50mm (extended spindles available for up to 65mm)	
Backset	60mm optional: 70mm, 89mm and 127mm	
Cabling	3m cable with 12 pin plug supplied	
Finish	Satin stainless steel (other finishes on request)	

Mounting details



Testing and Compliance



Fire:
Tested to 2 hours on fire door assemblies as specified in AS 1905.1:2015 Part 1 Fire Resistant Doorsets



Contact Allegion for more details